

Sponsorship Initiative

at the
Columbus Chapel & Boal Mansion Museum





Columbus Chapel & Boal Mansion Museum

Sponsorship Initiative

The Columbus Chapel & Boal Mansion Museum, established in 1952 in Boalsburg, PA, is a rare gem that attracts thousands of visitors each year from across the US and internationally. Nowhere else can visitors see the largest collection of Christopher Columbus art and artifacts in North America, including two pieces of the True Cross presented to the Columbus family in 1817. Very rarely does a historic family home showcase all-original furniture, paintings, and sculptures, rather than reproductions or period pieces brought in from other locations. In addition, the Boal Museum collections contain thousands of personal items including vintage fashions, silver and china, musical instruments, and weaponry. Where else can students of all ages learn about the growth of transportation, politics, military science, and a variety of industries in Centre County—all in one place? Now your company, foundation, or trust can provide much-needed support to the Boal Museum in a variety of ways, through the **Sponsorship Initiative Program**.



Sponsorship Ideas for Your Organization

Art Collections

Original works of art in the Museum's collections include paintings as well as three-dimensional items. To date, more than 300 pieces have been inventoried. Paintings range from Renaissance works to more modern artists, often studied by art students at local and international universities. Historic three-dimensional art includes pieces from King Tutankamen's grandparents' tomb, as well as Roman, Greek, Chinese, and early American items. Collections of antique jewelry, fans, chinaware, glassware, children's toys, and rare books are among some of the other collections at the Museum. Many items are in need of restoration. Your company's annual sponsorship could support much-needed restoration of works of art, as well as maintenance of the many remarkable and varied collections.



Photo by Mary Szmolko



Photo by Cindy Shaler



Photos above by Art Pentz

Photo on previous page by Bob Cameron



Photo by Mary Szmolko

Columbus Chapel and Columbus Exhibit

Almost all the original structure and contents of the Chapel were relocated from the Columbus family castle in Asturias, Spain, in the early 1900s. The Chapel remains a consecrated church in which services are conducted at least annually. Together with the nearby Columbus Exhibit, it houses the largest collection of Christopher Columbus artifacts in North America. In the Chapel are vestments used by itinerant priests, a reliquary containing two pieces of the True Cross, and many examples of Renaissance art. The Columbus Exhibit building contains nonreligious Columbus artifacts, including including 160,000-plus pages of manuscripts from the Columbus family dating back to at least 1450, stored in a climate-controlled, fire-resistant vault. These have been digitized to make the contents available to scholars around the world. Your company's annual sponsorship could support continued maintenance of the Chapel or sorely needed restoration for works of art.

Summer Kitchen Complex

The summer kitchen complex includes the 19th-century summer kitchen and cold storage buildings, the massive outdoor stone fireplace, tea room remnants, and ice house foundation. The outdoor fireplace has been restored and provides living-history examples of hearth cooking at some of our special events. The kitchen will be restored to contain historic kitchen artifacts as well as to serve as a commercial kitchen for indoor and outdoor events. The ice house and the tea room will also be restored. Your company's annual sponsorship could support restoration of this complex of small buildings for display to visitors, as well as providing a commercial kitchen for the Museum.



Photo by Art Pentz

Public Gardens & Trails

The Museum has an aggressive program underway to restore and create formal gardens within the 48 acres of the historic Boal Estate grounds. The massive historic trees and idyllic Blue Spring accentuate the beautiful grounds. Gardens currently under construction include the Shakespeare Garden, the Asian Garden, and the Memorial Rose Garden. A Tropical Hothouse/Butterfly Vivarium is planned to occupy the Victorian greenhouse relocated from Rockview State Prison, positioned over the original swimming pool. Fountains, ponds, and garden sculptures are planned or already established. Over three miles of public trails have been constructed, following remnants of Old Boalsburg Road and meandering along the stream and through the Estate's woods. A bridge across the stream connecting the Estate with Blue Spring Park in Boalsburg Village and helpful trail signage were completed in 2020 and 2021, respectively. Two gardens are currently part of a Commemorative Fund established to recognize Bob Cameron's dedication as Executive Director for 7 years. Your company's annual sponsorship could support continued maintenance of gardens and trails, creation of new gardens including the Butterfly Vivarium, or support for one or more individual gardens.



Photo by Bob Cameron



Photo by Mary Szmolko

Transportation and Early American Life

This newly refurbished building showcases the Museum's extensive collection of twelve historic carriages, coaches, buggies, and surreys, some of which were built at the Boalsburg Carriage Works. Historically, Boalsburg's Main Street was known as the King's Highway and was part of the main transportation route to the western US. In the 1790s, the original Boal family opened the village's first general store and tavern on Main Street. This exhibit also houses the Museum's collection of saddles, tack, and early Americana items, including a sales ledger from the Boal Tavern. Your company's annual sponsorship could support refurbishment of more carriages as well as continued maintenance of the entire exhibit.

Armory and World War I Exhibit

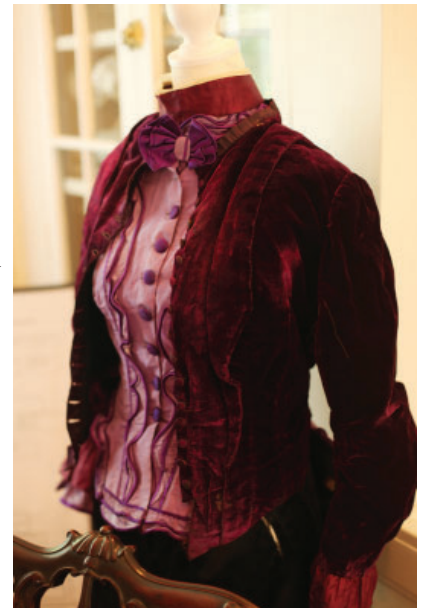
The Armory collection is now in a secure, conditioned exhibit space. The remarkable and diverse array of weapons and armor on display, ranging from the medieval period through WWI, has been professionally curated. In addition to weapons, the Museum's military exhibit includes original WWI photographs, maps, posters, flags, furniture, personal items, and medals received for service by Colonel Theodore Davis Boal and his son Ambassador Pierre Boal. The Armory Committee has made a digital inventory of all items. Your company's annual sponsorship could support continued maintenance of the entire exhibit as well as future curation.

Photo by Cindy Shaler



Vintage Fashions

The Museum's extensive collection of vintage clothing and accessories has been partially restored. Many of these items are showcased on both floors of the Mansion and in the Chapel. Clothing in the exhibit ranges from 500 years old to 19th-century Parisian fashions and includes military uniforms worn by members of the Boal family. More than 30 historic trunks held many of these fashions, including three Louis Vuitton trunks from the early 1900s, also on display. Your company's annual sponsorship could support additional restoration of clothing and accessories, creation of new displays, and continued maintenance of the collection.



Photos by Mary Szmolko

Other sponsorships that appeal to your organization are certainly available, such as antique musical instruments, individual rooms or exhibits, or any of our special events. Or a Materials Sponsorship might better serve your needs: providing materials annually or semiannually for use in Museum construction, renovation, or landscaping. Just let us know your area of interest. To learn more about opportunities for sponsorship, please contact either Executive Director Anna Rupprecht at arupprecht@maryu.marywood.edu or 724-859-5324 or Board President Cindy Shaler at cshaler@comcast.net or 814-360-2052.

Corporate Sponsorship Levels

Following are levels of sponsorship you might consider for 5 years:

Bronze:	\$ 500–749 per year
Silver:	\$ 750–999 per year
Gold:	\$1,000–1,499 per year
Platinum:	\$1,500–2,500 per year
Diamond:	\$2,500–3,000 per year
Exclusive Sponsor of a Specific Exhibit, Event, or Project:	\$3,000+ per year
Materials:	As appropriate

In appreciation for your sponsorship, the Museum provides the following:

1. **All Sponsors** are named on the Permanent Sponsors plaque posted prominently at the Visitor Center.
2. **Exclusive Sponsors** are also named in all communications regarding the pertinent exhibit, event, or project. If the contribution is for an exhibit, a second plaque is posted at that exhibit.
3. **Each** sponsor receives a free membership for the organization plus a museum tour for 8 guests.
4. **All** sponsors receive invitations to all Museum events.
5. **All** sponsors are recognized in every Museum event program, throughout the year.

Credits

Text: Bob Cameron and Cindy Shaler

Editing, design, and layout: Cindy Shaler

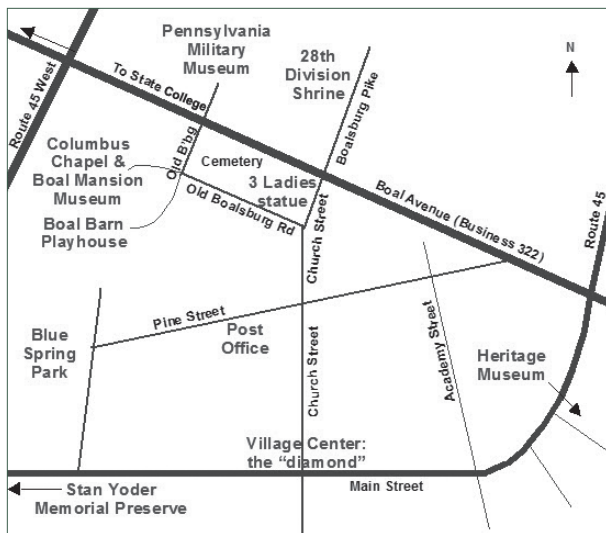
Cover photograph: Michelle Miller

Inside photographs: Art Pentz, Bob Cameron, Cindy Shaler, and Mary Szmolko

Rights

Copyright © 2023 Columbus Chapel & Boalsburg Estate Society. All rights reserved.

Duplication of text or photographs in any manner is prohibited without written permission from the copyright owner, except for brief quotations of text within reviews or promotional materials. Address requests to Executive Director, Columbus Chapel & Boal Mansion Museum, P.O. Box 116, Boalsburg, PA 16827.



Columbus Chapel & Boal Mansion Museum

P.O. Box 116

Boalsburg, PA 16827-0116

Office phone: 814-466-6210

Email: office@boalmuseum.com

Website: boalmuseum.com

Facebook: [BoalMansionMuseum](https://www.facebook.com/BoalMansionMuseum)

Twitter: [@BoalMuseum](https://twitter.com/BoalMuseum)

Instagram: [BoalMuseum](https://www.instagram.com/BoalMuseum)

Directions

From State College, drive south/east on South Atherton Street (Business Route 322), 3.5 miles, through the traffic signal at Route 45 West. Take the next right onto Old Boalsburg Road, directly across from the entrance to the PA Military Museum. Follow parking instructions below.

From Harrisburg, PA, and points south, take Route 322 towards State College. About 4 miles before State College, exit onto Business Route 322 toward Boalsburg. Drive less than a mile, through 2 traffic signals. Turn left onto Old Boalsburg Road. Follow parking instructions below.

From Route 80 and points north, take exit 168 onto Route I-99/US-220. After about 8 miles, take exit 73 onto Route 332 East. After 3.9 miles, take the exit for Route 45 W/Oak Hall/Boalsburg, turn right off the ramp, and drive 1/2 mile to the traffic light. Turn left onto Atherton Street (Business Route 322). Take the first right onto Old Boalsburg Road. Follow parking instructions below.

PARKING: Cars can either (1) turn in at the left-hand stone gate and follow the gravel road around the Barn or further to the front of the Mansion, to one of several parking areas, or (2) turn in at the middle stone gate, drive over the bridge and straight ahead, then left around the Mansion to the parking areas. **BUSES MUST** take option 1 because the bridge is too narrow.