

News&Views

from the

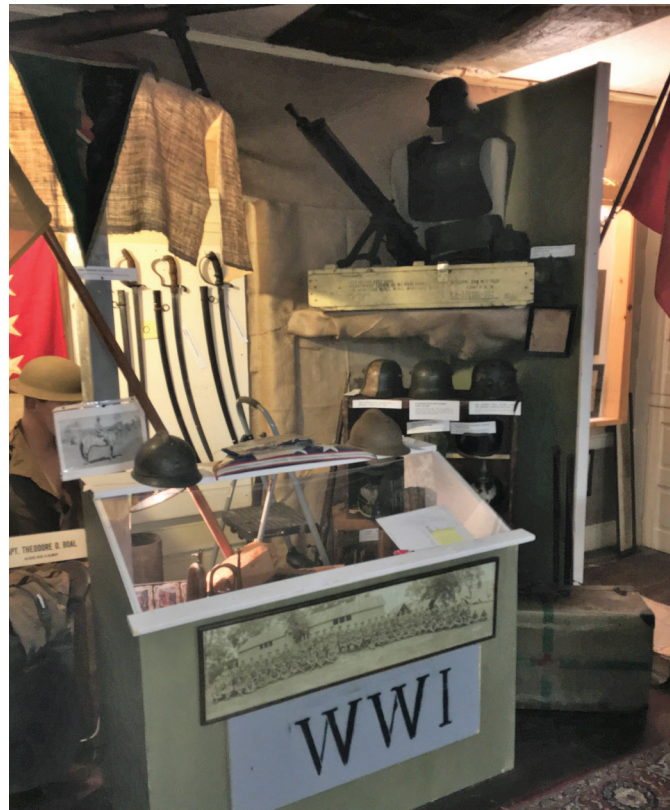
Columbus Chapel & Boal Mansion Museum

Vol. 2, No. 1

Welcome once more to *News&Views*. With the opening of several new exhibits at the Museum this year, we look forward to increased visits from old and new friends alike. Here are some thoughts and pictures about our work and plans for the coming season, as well as memories of the past one.

*The newly reimagined **Armory** will open to the public in May 2017. The primary Boal family collection of weapons was moved from another location on the property. Uniforms, additional weapons, and new signage have been added and the whole is now arranged by era. Information on each weapon is being augmented by weapons expert Frank Martinelli from Carlisle. Future plans include descriptive information available to visitors about each historical period.*

— Photos this page by Cindy Shaler



*Another new exhibit for the 2017 season is the **second-floor living area** of the Boal Mansion. The rooms used by Colonel Theodore Davis Boal, his French wife Mathilde, and their granddaughter Mimi will display beautiful antique furniture, paintings, military uniforms, everyday clothing, and other items in the collections that have not been seen by Museum visitors before.*



*A major undertaking for the Museum is to preserve and protect the 165,000 pages of **Columbus family documents**, dating from 1453 to 1908. These have been housed in the Chapel since it was built in 1912. All were microfilmed long ago and are available for study in Penn State's library. This summer they will find a new home in a refurbished, secure, environmentally conditioned area in a building near the Chapel. They will be gradually digitized so they can be studied by scholars worldwide. The same building will have a new exhibit of Christopher Columbus's contributions to the world's cuisines. Where would we be without the tomatoes, potatoes, beans, and squashes that he brought back from the New World?*

– Photos this page by Mary Szmolko

Following are photos from the 2016 Christmas season at the Museum, including the High Tea and Candlelight Tour of the Boal Mansion and Columbus Chapel on Sunday, December 4. Candlelight Tours were also offered Saturday evening, December 3, and were overwhelmingly attended. This was the first time in many decades that the Mansion and Chapel were decorated for the season and open to the public.



Museum docents and volunteers enjoyed the better part of a day decorating the outside of the Mansion and grounds. Five live trees from Tannenbaum Farms were beautifully adorned inside the Mansion by local businesses (in alphabetical order) A Basket Full, Bella di Vita, First National Bank, and ReMax Realty, and by students of St. Joseph's Academy. One choir of St. Joe's students provided seasonal atmosphere in the Chapel, while another provided outdoor caroling as guests were guided by docents carrying lanterns. Thanks to everyone for their elegant contributions!



Docent Ruth Brigandi recounts past Christmases at the Boal Mansion. Below, visitors listen to Docent Linda Pagani describe antiquities in the Columbus Chapel.



– Photos this page by Mary Szmolko



Docent Janice Sherer serves tea at the Museum's first Christmas High Tea.

You can participate in the growth and development at the Museum in many ways: as a volunteer (a few hours a month, a few hours a week, or at special events); as a Museum member; or simply by visiting for tours with your friends and family. You can use the new walking trail around the Museum grounds at any time, or just admire all the new gardens and the amphitheater. Please keep in touch: call Director Bob Cameron at 814-876-0129 or leave a message on the office phone, 814-466-6210.



"Mathilde Boal" (Madeline Helfer of St. Joseph's Academy) joins a Candlelight Tour of the Chapel, stopping briefly at her prie dieu. Other "characters" from the Boal family history took part in the Candlelight Tours as well.

– Photos this page by Mary Szmolko

Columbus Chapel & Boal Mansion Museum
P.O. Box 116 Boalsburg, PA 16827
Email: office@boalmuseum.com
Website: www.boalmuseum.com